

# SCIENTIFIC DATA

**OPEN****SUBJECT CATEGORIES**

- » Marine chemistry
- » Biogeochemistry

Received: 25 June 2014

Accepted: 27 October 2014

Published: 9 December 2014

## Concentrations and ratios of particulate organic carbon, nitrogen, and phosphorus in the global ocean

Adam C. Martiny<sup>1,2</sup>, Jasper A. Vrugt<sup>1,3</sup> & Michael W. Lomas<sup>4</sup>

Knowledge of concentrations and elemental ratios of suspended particles are important for understanding many biogeochemical processes in the ocean. These include patterns of phytoplankton nutrient limitation as well as linkages between the cycles of carbon and nitrogen or phosphorus. To further enable studies of ocean biogeochemistry, we here present a global dataset consisting of 100,605 total measurements of particulate organic carbon, nitrogen, or phosphorus analyzed as part of 70 cruises or time-series. The data are globally distributed and represent all major ocean regions as well as different depths in the water column. The global median C:P, N:P, and C:N ratios are 163, 22, and 6.6, respectively, but the data also includes extensive variation between samples from different regions. Thus, this compilation will hopefully assist in a wide range of future studies of ocean elemental ratios.

<b>Design Type(s)</b>	observation design • time series design • data integration • biogeochemistry
<b>Measurement Type(s)</b>	atomic element profiling
<b>Technology Type(s)</b>	data collection method
<b>Factor Type(s)</b>	period
<b>Sample Characteristic(s)</b>	marine biome • Atlantic Ocean • Indian Ocean • Mediterranean Sea • Pacific Ocean • Southern Ocean

<sup>1</sup>Department of Earth System Science, University of California, Irvine, California 92697, USA. <sup>2</sup>Department of Ecology and Evolutionary Biology, University of California, Irvine, California 92697, USA. <sup>3</sup>Department of Civil and Environmental Engineering, University of California, Irvine, California 92697, USA. <sup>4</sup>Bigelow Laboratory for Ocean Sciences, East Boothbay, Maine 04544, USA.

Correspondence and requests for materials should be addressed to A.C.M. (amartiny@uci.edu)

## Background & Summary

One of the fundamental tenets of ocean biogeochemistry is the Redfield ratio. Redfield identified a similarity between the N:P ratio of plankton living in the surface ocean and that of dissolved nitrate and phosphate in the deep ocean<sup>1,2</sup>. He hypothesized that the deep ocean nutrient concentrations were controlled by the elemental requirements of the surface plankton. This concept has been extended to include other elements like carbon and remains a cornerstone for our understanding of ocean biogeochemistry. Despite the importance of this ratio, there is no obvious mechanism for a globally consistent C:N:P ratio of 106:16:1 (i.e., Redfield ratio), and there is substantial elemental variation among ocean taxa<sup>3–6</sup>. Furthermore, many small plankton are not homeostatic but instead, the cellular elemental content varies depending on growth conditions<sup>7</sup>. Thus, it has become apparent that changes in biodiversity or cell physiology can lead to variations in marine plankton elemental stoichiometry.

Variations in elemental content and ratios of marine microbial communities have multiple important implications. Broecker and Henderson have proposed that increased plankton C:N:P ratios and thus increased CO<sub>2</sub> uptake in the ocean could explain the glacial to inter-glacial variation in atmospheric CO<sub>2</sub> concentration<sup>8</sup>. Rates of N<sub>2</sub> fixation as well as competition between phytoplankton and N<sub>2</sub>-fixers are also dependent upon an assumed N:P ratio (specifically the Redfield ratio). Recently, multiple researchers have argued that our understanding (or lack thereof) of cellular elemental stoichiometry has a large influence on our ability to estimate the global ocean N budget<sup>9,10</sup>.

It has been observed that specific phytoplankton groups as well as particulate organic matter display regional differences in elemental stoichiometry<sup>11–14</sup>. For example, the C:P, N:P, and C:N ratios all appear to be above Redfield proportions in the oligotrophic gyres, near Redfield proportions in upwelling regions like the Eastern Equatorial Pacific Ocean, and below Redfield proportions in colder, nutrient rich high latitude environments<sup>11,12</sup>. The ratios may also vary between the gyres depending on the nutrient supply ratio and the resulting degree of nitrogen versus phosphorus limitation. Thus, rather than globally static C:N:P ratios, differences in environmental conditions and plankton community composition can lead to variations in the elemental composition of plankton and particulate organic material<sup>14,11–13,15</sup>. In addition, we also observe extensive variations in the ratios of particulate nutrients which cannot be explained with common physio-chemical parameters<sup>11,12</sup>. Thus, future studies are needed to identify factors causing this variation.

The elemental stoichiometry of ocean plankton communities has also been the focus in many model studies<sup>10,15–17</sup>. This includes models describing cellular elemental composition in response to changes in light intensity, nutrients, or other environment conditions<sup>16,17</sup>. Other models focus on identifying regional differences in the elemental stoichiometry<sup>15</sup>. Thus, models have indicated that the elemental stoichiometry of cells, communities, and ocean regions are not constant but vary depending on biodiversity and environmental conditions. However, we currently do not have global datasets to evaluate the output of such models.

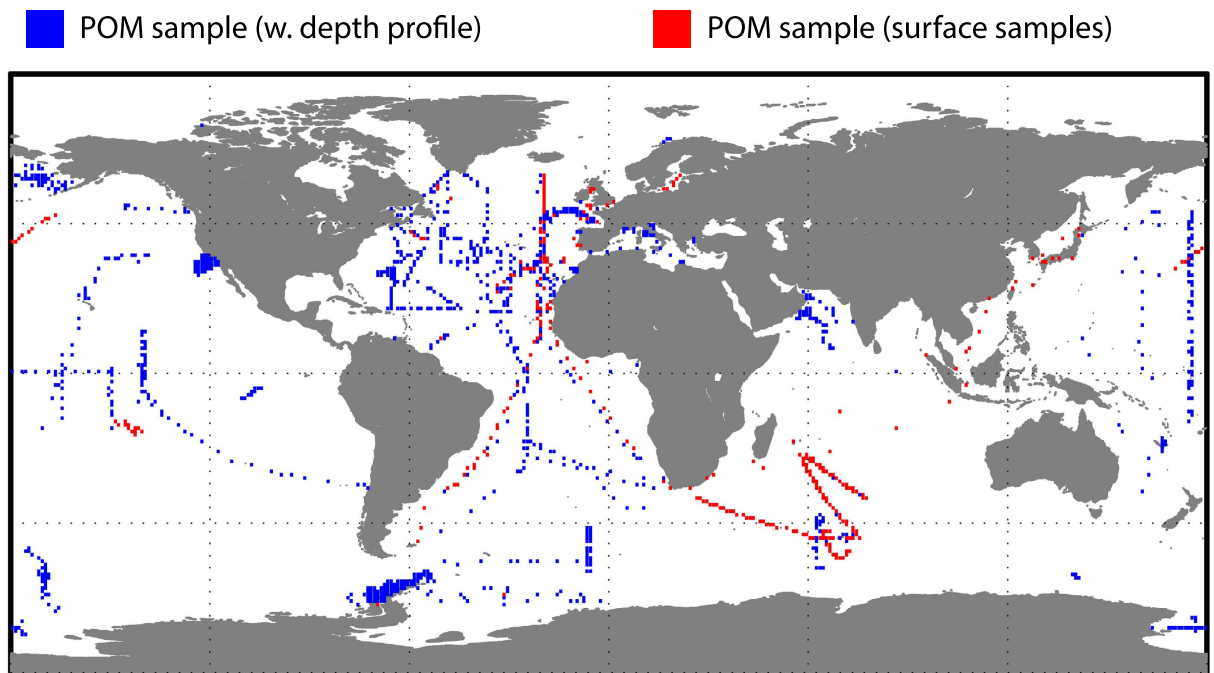
To address this issue, we here present a compilation of measurements of marine particulate organic carbon (POC), nitrogen (PON), and phosphorus (POP) from 70 cruises or time-series during the last 40 years (Table 1 (available online only))<sup>12,18–67</sup>. The dataset includes a total of 100,605 discrete measurements of particulate organic nutrients including 6940 POP, 46728 PON, and 46937 POC measurements. This leads to 5948 N:P, 5573 C:P, and 45476 C:N observations. Due to the common concurrent and largely automated measurements of PON and POC, these two particulate nutrients are over-represented in comparison to the sparse measurements of POP.

It is worth noting that this represents an aggregated dataset collected by many independent researchers (Table 1 (available online only)). Even though most studies utilize the same techniques and sample volumes, there are likely many small deviations in the technical approach. As a result, some care should be taken when comparing values.

The data covers 5336 unique stations from all major ocean regions (Figure 1). 89% of the samples originate from the top 200 m of the water and thus the dataset is skewed towards processes occurring in or near the euphotic zone (Figure 2a). The data is also biased towards regions of oceanographic research. This includes samples near the Palmer Station in the Southern Ocean, North Atlantic Ocean and Eastern North Pacific Ocean (including the HOT site and California Current) (Figure 2b and Figure 2c). Thus, this compilation of data identifies regions where we currently have very sparse data (e.g., the South Pacific, South Atlantic, and Eastern Indian Ocean). Overall, the median C:P, N:P, and C:N ratios are 163, 22, and 6.6, respectively, in this dataset but the data span a wide range for all three ratios (Figure 2d–f). Combined with the wide geographic extent of the data, this compilation will enable a range of analyses of elemental concentrations or ratios in particulate organic matter.

## Methods

Nearly all POC and PON measurements were done by collecting seawater particles onto glass-fibers filters (i.e., GF/F) and quantified using an combustion GC-IR based elemental analyzer<sup>68</sup>. The only exceptions were ‘EUMELI’ and ‘OLIPAC’, where PON was measured using a chemical oxidation technique<sup>38</sup>. Particulate phosphorus was quantified using the ash-hydrolysis method<sup>26,69</sup>. We operationally defined station IDs as samples taken within a 1° × 1° area on the same day<sup>11</sup>.



**Figure 1.** Global distribution of POM measurements in the dataset. A depth profile was defined as at least two unique depths from the same station.

The data was gathered by searching available databases (i.e., PANGAEA, BCO-DMO, JGOFS, and IFREMER) as well as published literature. We aggregated all available datasets in order to create the most exhaustive global description of particulate organic nutrients and thus did not exclude any specific cruises or time-series. The only data excluded were samples subjected to a prior manipulation or incubation.

### Data Records

The dataset includes the following fields for each record:

- Cruise
- Year
- Month
- Day
- Latitude (−90 to 90)
- Longitude (−180 to 180)
- Sampling depth (m)
- Particulate organic Carbon ( $\mu\text{M}$ )
- Particulate organic Nitrogen ( $\mu\text{M}$ )
- Particulate organic Phosphorus ( $\mu\text{M}$ )

#### Data Record 1

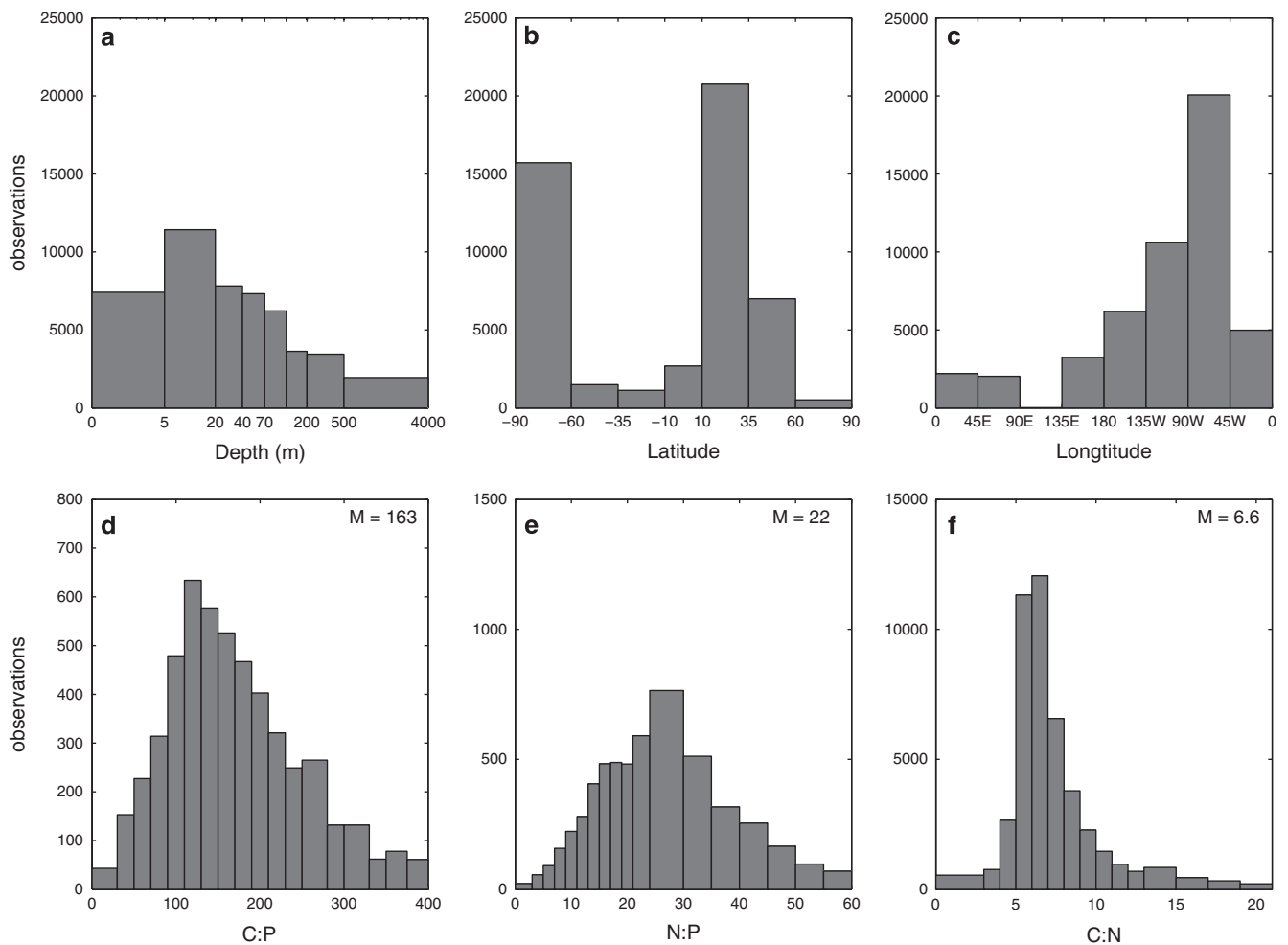
The database files (June 20, 2014 version) in csv format were uploaded to Dryad (Data Citation 1). A file containing all the fields listed above is available. ‘−9999’ denotes missing data.

#### Data Record 2

The particulate nutrient data were also uploaded to the Biological and Chemical Oceanography Data Management Office system (BCO-DMO) (Data Citation 2) with all the fields listed above. The database is organized at level 0 by cruise dataset (Table 1 (available online only)), level 1 by stations, and level 2 with the POM data. ‘−9999’ describes missing data. This dataset will be updated if new data becomes available.

### Technical Validation

In our experience, when all precautions are taken, variance between replicate samples for elemental analysis can be  $< 5\%$ , assuming the actual sample is above the analytical blank. However, not all precautions are always taken, for example it is rare that when sampling for POC that the entire Niskin bottle is drained, well mixed and then subsampled. It is known that as the sample sits in the bottle, large particles sink to the bottom and often below the spigot resulting in an underestimation of particulate matter concentrations in the seawater sample<sup>70</sup>. There is also the question of limit of detection. For particulate analyses, this depends in part upon the volume you are filtering, the concentration of your



**Figure 2.** Summary of POM measurements and ratios in the aggregated dataset. Histogram of the number of observations across depths (a), latitude (b), and longitude (c) as well as the range of C:P (d), N:P (e), and C:N (f) elemental ratios. M represents the median value. Please note a difference in the total number of observations for each elemental ratio.

analyte of interest and overall cleanliness of your procedures<sup>71</sup>. For example, in the Sargasso Sea, where particulate nutrients are very low, we filter 4 liters of seawater for particulate organic phosphorus<sup>26</sup> to ensure that the sample well exceeds the blank. In our experience making these measurements using the methods reported here, reasonable blank measurements for POC, PON and POP are  $\sim 0.5 \mu\text{M}$ ,  $\sim 0.04 \mu\text{M}$  and  $\sim 3 \text{ nM}$ , respectively. It is common practice to subtract blanks from analyzed samples, and we assume that has been done for all reported data however, we cannot be fully confident in how that blank correction was conducted. Whether blank-corrected samples are significantly different than zero is a different question and depends upon the actual value and variability of the blank which is not commonly reported in published works or available datasets. However, we are confident that blank-corrected particulate organic matter concentrations greater than  $\sim 0.5 \mu\text{M}$  POC,  $\sim 0.05 \mu\text{M}$  PON and  $5 \text{ nM}$  POP are valid numbers to report. This benchmark may change between ocean regimes and with specific protocols. We should also note that some samples give either very high or low elemental ratios. These could arise from analytical artifacts, for example, one or both values in the ratio being close to the analytical detection limit, as well as other sampling artifacts. However, we currently do not have a good handle on the spatio-temporal variation in particulate nutrient concentrations and ratios and thus, it is difficult to give precise guidelines for flagging possible artifacts and thus really high/low values should be examined more closely and used with caution.

#### Usage Notes

The dataset can be used to identify novel regional or environmentally driven patterns in both the concentration of particulate organic matter as well as the ratios of different elements. Within this dataset are observations from time-series stations and thus temporal analysis of particulate organic matter

concentrations and ratios can also be evaluated. Further, the data can be utilized to evaluate outputs from ocean biogeochemical models.

## References

1. Redfield, A. C. *On The Proportions Of Organic Derivatives In Sea Water And Their Relation To The Composition Of Plankton. James Johnstone Memorial Volume*, 176–192 (Liverpool University Press, 1934).
2. Redfield, A. C. The biological control of the chemical factors in the environment. *Am. Sci.* **46**, 1–18 (1958).
3. Geider, R. J. & La Roche, J. Redfield revisited: variability of C : N : P in marine microalgae and its biochemical basis. *Eur. J. Phycol.* **37**, 1–17 (2002).
4. Klausmeier, C. A., Litchman, E., Daufresne, T. & Levin, S. A. Optimal nitrogen-to-phosphorus stoichiometry of phytoplankton. *Nature* **429**, 171–174 (2004).
5. Zimmermann, A. E., Allison, S. D. & Martiny, A. C. Phylogenetic constraints on elemental stoichiometry and resource allocation in heterotrophic marine bacteria. *Environ. Microbiol.* **16**, 1398–1410 (2014).
6. Bertilsson, S., Berglund, O., Karl, D. M. & Chisholm, S. W. Elemental composition of marine *Prochlorococcus* and *Synechococcus*: Implications for the ecological stoichiometry of the sea. *Limnol. Oceanogr.* **48**, 1721–1731 (2003).
7. Rhee, G.-Y. A continuous culture study of phosphate uptake, growth rate and polyphosphate in *Scenedesmus sp.* *J. Phycol.* **9**, 495–506 (1973).
8. Broecker, W. S. & Henderson, G. M. The sequence of events surrounding Termination II and their implications for the cause of glacial-interglacial CO<sub>2</sub> changes. *Paleoceanography* **13**, 352–364 (1998).
9. Mills, M. M. & Arrigo, K. R. Magnitude of oceanic nitrogen fixation influenced by the nutrient uptake ratio of phytoplankton. *Nat. Geosci.* **3**, 412–416 (2010).
10. Weber, T. & Deutsch, C. Oceanic nitrogen reservoir regulated by plankton diversity and ocean circulation. *Nature* **489**, 419–422 (2012).
11. Martiny, A. C., Vrugt, J. A., Primeau, F. W. & Lomas, M. W. Regional variation in the particulate organic carbon to nitrogen ratio in the surface ocean. *Global Biogeochem. Cycles* **27**, 723–731 (2013).
12. Martiny, A. C. *et al.* Strong latitudinal patterns in the elemental ratios of marine plankton and organic matter. *Nat. Geosci.* **6**, 279–283 (2013).
13. Weber, T. S. & Deutsch, C. Ocean nutrient ratios governed by plankton biogeography. *Nature* **467**, 550–554 (2010).
14. Arrigo, K. R. *et al.* Phytoplankton community structure and the drawdown of nutrients and CO<sub>2</sub> in the Southern Ocean. *Science* **283**, 365–367 (1999).
15. Daines, S. J., Clark, J. R. & Lenton, T. M. Multiple environmental controls on phytoplankton growth strategies determine adaptive responses of the N : P ratio. *Ecol. Lett.* **17**, 414–425 (2014).
16. Bonachela, J. A., Allison, S. D., Martiny, A. C. & Levin, S. A. A model for variable phytoplankton stoichiometry based on cell protein regulation. *Biogeosciences* **10**, 4341–4356 (2013).
17. Geider, R. J., MacIntyre, H. L. & Kana, T. M. A dynamic regulatory model of phytoplankton acclimation to light, nutrients, and temperature. *Limnol. Oceanogr.* **43**, 679–694 (1998).
18. Aiken, J. *et al.* The Atlantic Meridional Transect: overview and synthesis of data. *Prog. Oceanogr.* **45**, 257–312 (2000).
19. Mahaffey, C., Williams, R. G., Wolff, G. A. & Anderson, W. T. Physical supply of nitrogen to phytoplankton in the Atlantic Ocean. *Global Biogeochem. Cycles* **18**, GB1034 (2004).
20. Mengesha, S., Dehairs, F., Fiala, M., Elskens, M. & Goeyens, L. Seasonal variation of phytoplankton community structure and nitrogen uptake regime in the Indian Sector of the Southern Ocean. *Polar Biol.* **20**, 259–272 (1998).
21. Leblanc, K. *et al.* Particulate biogenic silica and carbon production rates and particulate matter distribution in the Indian sector of the Subantarctic Ocean. *Deep-Sea Res. Pt. II* **49**, 3189–3206 (2002).
22. Smetacek, V., DeBaar, H. J. W., Bathmann, U. V., Lochte, K. & VanderLoeff, M. M. R. Ecology and biogeochemistry of the Antarctic Circumpolar Current during austral spring: A summary of Southern Ocean JGOFS cruise ANT X/6 of RV Polarstern. *Deep-Sea Res. Pt. II* **44**, 1–21 (1997).
23. Provost, C. in *Berichte zur Polar- und Meeresforsch* 68 (Alfred Wegener Institute for Polar and Marine Research, 2007).
24. Sathyendranath, S. *et al.* Carbon-to-chlorophyll ratio and growth rate of phytoplankton in the sea. *Mar. Ecol. Prog. Ser.* **383**, 73–84 (2009).
25. Copin-Montegut, C. & Copin-Montegut, G. Stoichiometry of carbon, nitrogen, and phosphorus in marine particulate matter. *Deep-Sea Res. Pt. I* **30**, 31–46 (1983).
26. Lomas, M. W. *et al.* Sargasso Sea phosphorus biogeochemistry: an important role for dissolved organic phosphorus (DOP). *Biogeosciences* **7**, 695–710 (2010).
27. Moutin, T. *et al.* Phosphate availability and the ultimate control of new nitrogen input by nitrogen fixation in the tropical Pacific Ocean. *Biogeosciences* **5**, 95–109 (2008).
28. Karl, D. M. *et al.* Aerobic production of methane in the sea. *Nat. Geosci.* **1**, 473–478 (2008).
29. Hopkinson, B. M. *et al.* Iron limitation across chlorophyll gradients in the southern Drake Passage: Phytoplankton responses to iron addition and photosynthetic indicators of iron stress. *Limnol. Oceanogr.* **52**, 2540–2554 (2007).
30. Hewson, I., Paerl, R. W., Tripp, H. J., Zehr, J. P. & Karl, D. M. Metagenomic potential of microbial assemblages in the surface waters of the central Pacific Ocean tracks variability in oceanic habitat. *Limnol. Oceanogr.* **54**, 1981–1994 (2009).
31. Muller-Karger, F. *et al.* Annual cycle of primary production in the Cariaco Basin: Response to upwelling and implications for vertical export. *J. Geophys. Res.* **106**, 4527–4542 (2001).
32. Ohman, M. D., Powell, J. R., Picheral, M. & Jensen, D. W. Mesozooplankton and particulate matter responses to a deep-water frontal system in the Southern California Current System. *J. Plankton Res.* **34**, 815–827 (2012).
33. Copin-Montegut, C. & Copin-Montegut, G. Chemistry of particulate matter from South Indian and Antarctic Oceans. *Deep. Res.* **25**, 911–931 (1978).
34. Krom, M. D. *et al.* Summary and overview of the CYCLOPS P addition Lagrangian experiment in the Eastern Mediterranean. *Deep-Sea Res. Pt. II* **52**, 3090–3108 (2005).
35. Veldhuis, M. J. W. & Kraay, G. W. Phytoplankton in the subtropical Atlantic Ocean: towards a better assessment of biomass and composition. *Deep-Sea Res. Pt. I* **51**, 507–530 (2004).
36. Van Den Broeck, N., Moutin, T., Rodier, M. & Le Bouteiller, A. Seasonal variations of phosphate availability in the SW Pacific Ocean near New Caledonia. *Mar. Ecol. Prog. Ser.* **268**, 1–12 (2004).
37. Buesseler, K. O. *et al.* Particle fluxes associated with mesoscale eddies in the Sargasso Sea. *Deep-Sea Res. Pt. II* **55**, 1426–1444 (2008).
38. Pujopay, M. & Raimbault, P. Improvement of the wet-oxidation procedure for simultaneous determination of particulate organic nitrogen and phosphorus collected on filters. *Mar. Ecol. Prog. Ser.* **105**, 203–207 (1994).
39. Rodier, M. & Le Borgne, R. Export flux of particles at the equator in the western and central Pacific ocean. *Deep-Sea Res. Pt. II* **44**, 2085–2113 (1997).



40. Bode, A., Castro, C. G., Doval, M. D. & Varela, M. New and regenerated production and ammonium regeneration in the western Bransfield Strait region (Antarctica) during phytoplankton bloom conditions in summer. *Deep-Sea Res. Pt. II* **49**, 787–804 (2002).
41. Karl, D. M. *et al.* Ecological nitrogen-to-phosphorus stoichiometry at station ALOHA. *Deep-Sea Res. Pt. II* **48**, 1529–1566 (2001).
42. Coale, K. H., Fitzwater, S. E., Gordon, R. M., Johnson, K. S. & Barber, R. T. Control of community growth and export production by upwelled iron in the equatorial Pacific Ocean. *Nature* **379**, 621–624 (1996).
43. Buesseler, K. *et al.* Upper ocean export of particulate organic carbon in the Arabian Sea derived from thorium-234. *Deep-Sea Res. Pt. II* **45**, 2461–2487 (1998).
44. Buesseler, K. O., Andrews, J. A., Hartman, M. C., Belostock, R. & Chai, F. Regional estimates of the export flux of particulate organic-carbon derived from Th-234 during the Jgofs Eqpac Program. *Deep-Sea Res. Pt. II* **42**, 777–804 (1995).
45. Cochran, J. K. *et al.* Short-lived thorium isotopes (Th-234, Th-228) as indicators of POC export and particle cycling in the Ross Sea, Southern Ocean. *Deep-Sea Res. Pt. II* **47**, 3451–3490 (2000).
46. Dietze, H., Oschlies, A. & Kahler, P. Internal-wave-induced and double-diffusive nutrient fluxes to the nutrient-consuming surface layer in the oligotrophic subtropical North Atlantic. *Ocean Dyn.* **54**, 1–7 (2004).
47. Karageorgis, A. P. *et al.* Comparison of particulate matter distribution, in relation to hydrography, in the mesotrophic Skagerrak and the oligotrophic northeastern Aegean Sea. *Cont. Shelf Res.* **23**, 1787–1809 (2003).
48. Gasol, J. M., Vazquez-Dominguez, E., Vaque, D., Agusti, S. & Duarte, C. M. Bacterial activity and diffusive nutrient supply in the oligotrophic Central Atlantic Ocean. *Aquat. Microb. Ecol.* **56**, 1–12 (2009).
49. Harrison, P. J. Station papa time series: Insights into ecosystem dynamics. *J. Oceanogr.* **58**, 259–264 (2002).
50. Loh, A. N. & Bauer, J. E. Distribution, partitioning and fluxes of dissolved and particulate organic C, N and P in the eastern North Pacific and Southern Oceans. *Deep-Sea Res. Pt. I* **47**, 2287–2316 (2000).
51. Fichaut, M. *et al.* MEDAR/MEDATLAS 2002: A Mediterranean and Black Sea database for operational oceanography. *Elsevier Oceanogr. Ser.* **69**, 645–648 (2003).
52. Kortzinger, A., Koeve, W., Kahler, P. & Mintrop, L. C. N ratios in the mixed layer during the productive season in the northeast Atlantic Ocean. *Deep-Sea Res. Pt. I* **48**, 661–688 (2001).
53. Mienert, J. *et al.* *Nordatlantik 1996, Cruise No. 36, 6 June 1996–4 November 1996* (ed. Mienert, J.) 98 (METEOR-Berichte, 1998).
54. De Madron, X. D. *et al.* Nutrients and carbon budgets for the Gulf of Lion during the Moogli cruises. *Oceanol. Acta* **26**, 421–433 (2003).
55. Passow, U. & Peinert, R. The role of plankton in particle-flux—2 case-studies from the Northeast Atlantic. *Deep-Sea Res. Pt. II* **40**, 573–585 (1993).
56. Tsubota, H., Ishizaka, J., Nishimura, A. & Watanabe, Y. W. Overview of NOPACCS (Northwest Pacific Carbon Cycle Study). *J. Oceanogr.* **55**, 645–653 (1999).
57. Claustre, H. *et al.* Variability in particle attenuation and chlorophyll fluorescence in the tropical Pacific: Scales, patterns, and biogeochemical implications. *J. Geophys. Res.* **104**, 3401–3422 (1999).
58. Bode, A. *et al.* Planktonic carbon and nitrogen cycling off northwest Spain: variations in production of particulate and dissolved organic pools. *Aquat. Microb. Ecol.* **37**, 95–107 (2004).
59. Guidi, L. *et al.* Does eddy-eddy interaction control surface phytoplankton distribution and carbon export in the North Pacific Subtropical Gyre? *J. Geophys. Res.* **117** (2012).
60. Karl, D. M., Christian, J. R., Dore, J. E. & Letelier, R. M. in *Foundations for Ecological Research West of the Antarctic Peninsula 70* (American Geophysical Union, 1996).
61. Van Wambeke, F., Christaki, U., Giannokourou, A., Moutin, T. & Souvemerzoglou, K. Longitudinal and vertical trends of bacterial limitation by phosphorus and carbon in the Mediterranean Sea. *Microb. Ecol.* **43**, 119–133 (2002).
62. Halewood, E. R., Carlson, C. A., Brzezinski, M. A., Reed, D. C. & Goodman, J. Annual cycle of organic matter partitioning and its availability to bacteria across the Santa Barbara Channel continental shelf. *Aquat. Microb. Ecol.* **67**, 189–209 (2012).
63. Yoshimura, T. *et al.* Dynamics and elemental stoichiometry of carbon, nitrogen, and phosphorus in particulate and dissolved organic pools during a phytoplankton bloom induced by in situ iron enrichment in the western subarctic Pacific (SEEDS-II). *Deep-Sea Res. Pt. II* **56**, 2863–2874 (2009).
64. Buesseler, K. O., Andrews, J. E., Pike, S. M. & Charette, M. A. The effects of iron fertilization on carbon sequestration in the Southern Ocean. *Science* **304**, 414–417 (2004).
65. Clemente, T. M. *et al.* SUPER HI-CAT: Survey of Underwater Plastic and Ecosystem Response between Hawaii and California. *Proc. from 2010 AGU Ocean Sci. Meet* (2010).
66. Charpy, L., Dufour, P. & Garcia, N. Particulate organic matter in sixteen Tuamotu atoll lagoons (French Polynesia). *Mar. Ecol. Prog. Ser.* **151**, 55–65 (1997).
67. Maya, M. V. *et al.* Intra-annual variability of carbon and nitrogen stable isotopes in suspended organic matter in waters of the western continental shelf of India. *Biogeosciences* **8**, 3441–3456 (2011).
68. Sharp, J. H. Improved analysis for “particulate” organic carbon and nitrogen from seawater. *Limnol. Oceanogr.* **19**, 984–989 (1974).
69. Solorzano, L. & Sharp, J. H. Determination of total dissolved phosphorus and particulate phosphorus in natural-waters. *Limnol. Oceanogr.* **25**, 754–757 (1980).
70. Gundersen, K., Orcutt, K. M., Purdie, D. A., Michaels, A. F. & Knap, A. H. Particulate organic carbon mass distribution at the Bermuda Atlantic Time-series Study (BATS) site. *Deep-Sea Res. Pt. II* **48**, 1697–1718 (2001).
71. Moran, S. B., Charette, M. A., Pike, S. M. & Wicklund, C. A. Differences in seawater particulate organic carbon concentration in samples collected using small- and large-volume methods: the importance of DOC adsorption to the filter blank. *Mar. Chem.* **67**, 33–42 (1999).

## Data Citations

1. Martiny, A. C., Vrugt, J. A. & Lomas, M. W. *Dryad* <http://dx.doi.org/10.5061/dryad.d702p> (2014).
2. Martiny, A. C., Vrugt, J. A. & Lomas, M. W. *The Biological and Chemical Oceanography Data Management Office* <http://www.bco-dmo.org/dataset/526747> (2014).

## Acknowledgements

We would like to thank all the researchers for sharing their data with us and making this compilation possible as well as Cyndy Chandler and Steve Gegg for enabling the posting of the data at The Biological and Chemical Oceanography Data Management Office (BCO-DMO). We would like to acknowledge the NSF Dimensions of Biodiversity and Biological Oceanography programs (A.C.M. and M.W.L.) and the UCI Environment Institute (A.C.M. and J.A.V.) for supporting our research.

### Author Contributions

A.C.M. conducted the data analysis and wrote the first draft of the manuscript with input from all authors. All authors contributed to the data compilations.

### Additional information

Table 1 is only available in online version of this paper.

**Competing financial interests:** The authors declare no competing financial interests.

**How to cite this article:** Martiny, A. C. *et al.* Concentrations and ratios of particulate organic carbon, nitrogen, and phosphorus in the global ocean. *Sci. Data* 1:140048 doi: 10.1038/sdata.2014.48 (2014).



This work is licensed under a Creative Commons Attribution-NonCommercial 4.0 International License. The images or other third party material in this article are included in the article's Creative Commons license, unless indicated otherwise in the credit line; if the material is not included under the Creative Commons license, users will need to obtain permission from the license holder to reproduce the material. To view a copy of this license, visit <http://creativecommons.org/licenses/by-nc/4.0/>

Metadata associated with this Data Descriptor is available at <http://www.nature.com/sdata/> and is released under the CC0 waiver to maximize reuse.